

End-to-End

The Parish Magazine of Rivenhall and Silver End



The Season of Mists and Mellow Fruitfulness

Many thanks to Karen Dakin for this wonderful picture and
in keeping with many requests for more dog pictures!

September

2023

50p

The Following are our services For September 2023

3rd September

9.30 am St Francis

11 am St Mary's

10th September

9.30 am St Francis

11 am St Mary's

17th September

9.30 am St Francis

11 am St Mary's

24th September

9.30 am St Francis

11 am St Mary's

13th Sunday after Trinity

Holy Communion

All Age Worship

14th Sunday after Trinity

Morning Prayer

Holy Communion

15th Sunday after Trinity

Holy Communion

No Service

16th Sunday after Trinity

Festival of Mary Magdalene

Morning Prayer

Holy Communion

Church Contacts

All Contact should be Via the Churchwardens

Parish Priest Jane Quinton 01245 210930

Churchwarden Denise Lane 07398 154289

Churchwarden Peter Hope 01376 502605

Email phope02@gmail.com

Rivenhall Contact Carole McCarthy 01376 512781

Silver End Contact Ruth Aitken 01376 583846

Rivenhall Website www.stmarysrivenhall.co.uk

St Francis Silver End Website www.st-francis.org.uk/

Contact the Editor 07904 235101 or phope02@gmail.com

'View from the Villages' – Music to the ears!

My goodness, is it really September? I know time flies when you're enjoying yourself, but it doesn't really feel like we've had much of a summer this year!

But as this month heralds the beginning of autumn, September is a word I can't hear without immediately thinking of the 70's 'Earth Wind and Fire' song of the same name – consequently, I now have the tune buzzing around my head as I write! But this has led me to look at the lyrics, and I find myself encouraged. Not at the many 'Ba-du-da's', that are in the song! But by the following lines:

*Love was changing the minds of pretenders
While chasing the clouds away*

Do you remember never a cloudy day?

Maybe this September will indeed bring us some cloudless skies? A late Indian summer perhaps? That would be nice J

Of course though, the reference to the weather is in fact an analogy – this song being, as the first word above infers, all about love. In this instance, the ability of 'love' to 'chase the clouds away'.....

Now having taken a few weddings this year, the ceremonies have all, thankfully, stayed dry! But I know of one a couple of weeks ago, as well as in fact my own wedding, where the rain fell all day! However, those clouds did not dampen the joy of the occasion. Because that's what love does..... brings joy in despondency, hope in despair, light in the darkness...

Love helps us overcome the most difficult situations and circumstances.

So, as autumn now officially begins, and the nights get darker, may all those worries, fears and anxieties that cloud our lives, *be chased away* by the loving support of one another. And also by the knowledge that we have a God, who having created us in love, with love, for love and to love.... loves us more than anyone.

Love and blessings

Rev Jane x

PRAYER HOUR



You are invited to meet with me on a Monday morning at 9am for an hour of prayer

Sitting in peace and waiting on God, either in silence, or in words.....

I will be rotating around the churches as follows:

SEPTEMBER – NOVEMBER – St Francis, Silver End

JANUARY – APRIL – St Mary + All Saints, Rivenhall

It will be lovely to see anyone that can come

God bless

Reverend Jane x

Readings and Collects for September 2023

3rd September

13th Sunday of Trinity

All Age Worship

Readings

Jeremiah 15:15-21

Romans 12:9-21

Matthew 16:21-28

Collect

Almighty God,
you search us and know us:
may we rely on you in strength
and rest on you in weakness,
now and in all our days;
through Jesus Christ our Lord.

10th September
Holy Communion

Readings

Ezekiel 33:7-11

Romans 13:8-14

Matthew 18:15-20

Collect

Merciful God,
your Son came to save us
and bore our sins on the cross:
may we trust in your mercy
and know your love,
rejoicing in the righteousness
that is ours through Jesus Christ our Lord.

14th Sunday after Trinity

17th September

Matins

Readings

Lord God,
defend your Church from all false teaching
and give to your people knowledge of your truth,
that we may enjoy eternal life
in Jesus Christ our Lord.

Collect

Lord God,
defend your Church from all false teaching
and give to your people knowledge of your truth,
that we may enjoy eternal life
in Jesus Christ our Lord

15th Sunday after Trinity

24th September

Holy Communion

Readings

Jonah 3:10-4:11

Philippians 1:21-30

Matthew 20:1-16

Collect

Lord of creation,
whose glory is around and within us:
open our eyes to your wonders,
that we may serve you with reverence
and know your peace at our lives' end,
through Jesus Christ our Lord.

16th Sunday after Trinity

The 50/50 Club August 2023 winners
1st S&S Jackson - 2nd B Hagan - 3rd Sean Perkins -

WITHAM AND VILLAGES MOTHERS' UNION

In September we begin a New Year with our Annual Service on Thursday 28th September at 2-o'clock in St Nicolas Church. The service will be led by The Rev Jane Quinton. After the service tea and cake will be served in the Church Hall. All members and friends will be welcome.

For more information contact Lynette Abbott on 01376 512586 or Joan Barrett on 01376 514617.

Rivenhall Village Hall,

located in Church Road, Rivenhall is available for hire by local clubs, organisations and residents for numerous activities and events including weekly/monthly classes or meetings, social functions, parties, fundraising events, wedding receptions, coffee mornings and much more. The hall has a well-equipped kitchen, toilet facilities including disabled and a level access from the car park. Clubs and organisations currently using the hall are:

Mondays: Under 5s storytelling mornings, Karate late afternoons and

Scottish dancing - 2nd, 4th and 5th Monday evenings.

Gardening Club 2nd Tues; Yoga Wednesday evenings; Carpet Bowls Thursday evenings.

Saturday afternoons - 7th Day Adventist Church

If you are interested in hiring the hall or joining any of the above groups, please contact the bookings secretary for further details by e-mailing:

rivenhallvillagehall@gmail.com

For more general enquiries, please e-mail:
secretaryrpfa@gmail.com

NOTES OF RIVENHALL PARISH COUNCIL MEETING HELD ON 1st AUGUST 2023 IN RIVENHALL VILLAGE HALL.

These notes are an abridged version of the draft minutes.

Present: Cllrs. Turner (Chairman), Macrae, Wright, Cairns, Prime and Hammond.

Also present: Parish Clerk, and five members of the public.

Apologies: An apology was received from Cllr Abbott, and ECC Cllr Ross Playle.

Chairman's Report: The Chairman reminded all councillors that were elected to serve all residents in Rivenhall Parish and so must be careful what matters they discuss over social media. He also commented upon the last meeting of the BALC particularly in regard to the BDC proposal to charge for the use of the green garden waste bins; the S106 monies not yet allocated by BDC and the lack of Planning personnel at BDC.

The Clerk will contact BDC to obtain a ruling upon local parish councillors, who are also BDC Planning Committee members, commenting upon planning applications at Parish Council meetings.

BDC Councillor Report: Cllr. Wright commented upon the BDC decision to charge for the use and collection of green bin garden waste at a cost of £55 per annum; apparently S106 monies cannot be used to offset the cost to BDC of this scheme.

Public Forum: Objections to the proposed National Grid pylons along and across Park Road and Church Road were discussed.

National Grid Norwich-Tilbury consultation: It was agreed to reiterate opposition to the current proposal for overland pylons in support of an off-shore option which, although marginally more expensive, is far less disturbing and distressing for local residents, not just within Rivenhall Parish but along the entire route as proposed.

Pedestrian barriers Oak Road & Rickstones Road: Initially the maintenance contractor to be requested to cut back a longer stretch of the verges, particularly at Rickstones Road.

It was agreed to request ECC Cllr. Playle to submit a bid to the

BDLHP for two road marked crossings on Rickstones Road, where pedestrians have to cross the road in order to continue walking on the footway.

Parish Clerk Vacancy: Two applications have been received. Cllrs Turner, Abbott and Prime will assess the applications and arrange for appropriate interview(s) so that proceedings can be initiated before the end of August if possible.

Village Green: The Chairman raised the question as to whether the parish council should seek ownership of the main village green from BDC to improve the deteriorating level of maintenance. By a vote of 5 to 1 it was agreed to explore this with BDC.

Footpath 48: There are ongoing discussions between the landowners and ECC PRoW regarding the future location and maintenance of this footpath (by Rivenhall Brook between Hoo Hall drive and the railway bridge). Cllr. Cairns reported that matters are in hand, via ECC to clear the original path and make it more accessible.

Highway Maintenance Highway maintenance: The maintenance contractor has been requested to trim back the overhanging tree branches along Henry Dixon Road from the railway bridge to the A12 underpass.

The Clerk will chase ECC Highways re the repair to the wall and handrail at the steps leading from St. Mary's Road to Church Road which was reported many months ago.

General Maintenance: BDC is dealing with the repairs to some of the faulty play equipment on the Albert Moss Playing Field.

Planning Applications: 23/01555/FUL - Enabling infrastructure, including junction and revised site access off Rickstones Road - Bellway Phase 4. It was agreed to raise objection to this application because of the dangerous junction at Rickstones Road. The traffic survey included within the applicant's documents was undertaken between 11.00 and 12.00 hrs, the quietest time of day for this area, not at any peak time for commuters and the school run for

parents, when vehicles are not travelling at 30 mph approaching dangerous bends and the exit from Rectory Lane. Councillors and the Clerk will liaise with former parish councillor M. A'Lee upon further traffic management measures. 23/01/759/FUL: Retention of mobile home, Colemans Cottage, Lt. Braxted Lane.

'No comments' letter forwarded to BDC.

23/01483/HH: Proposed outbuilding and carport - 16 Foxden. 'No comments' letter forwarded to BDC. (Application subsequently withdrawn).

Public Feedback: None.

Information Exchange: Cllr Cairns to check the Right-of-Way signage at Rivenhall Hall Farm.

Dates of Future Meetings: 5th September in The Henry Dixon Hall and 3rd October in Rivenhall Village Hall, both starting at 7:30 pm.

Brewing in Essex - 2023

My Good Beer Guide tells me that by 1978 there were only two active breweries in Essex, namely Ind Coope in Romford, and Ridleys at Hartford End. These two breweries are now distant memories whilst Grays in Chelmsford and Cooks in Halstead had both closed four years earlier in 1974.

For many years our beer selection was mainly limited to the big brands: you may remember Allied Breweries, Bass, Courage, Watneys, Scottish & Newcastle, and Whitbread. These "big-boys" had forced the market towards fizzy, tasteless keg beers by taking-over most regional breweries and quickly closing them, however it is curious that most of them have now disappeared too, and the favoured beer style is once again real-ale (though keg lager is widely available).

The good news is that Essex now has 30 small commercial real-ale breweries. They are:-

Billerica (in Billericay), Bishop Nick (Braintree), Black Box (Southend), Brentwood (Pilgrims Hatch), Chelmsford (Great

Baddow), Colchester (Wakes Colne), Courtyard (Gosfield), Crouch Vale (South Woodham Ferrers), Dominion (Coggeshall), Fallen Angel (Writtle), George's (Great Wakering), Harwich Town (Coggeshall), Jack Rabbit (Ardleigh), Leigh on Sea (Lea on Sea), Mersea Island (Mersea Island), Mighty Oak (Maldon), Moody Goose, Braintree, Neolithic (Bradwell on Sea), Other Monkey (Colchester), Posh Boys (Wickford), Pumphouse Community (Toppesfield), Red Fox, Coggeshall), Redchurch (Harlow), St Botolphs (Colchester), Shalford (Braintree), Sticklegs (Great Bromley), Watsons (Old Heath), White Heat (Halstead), Wibblers (Southminster), and Witham (Coggeshall).

Many of these Essex breweries have their own tap-room where you can enjoy their unique beers on the premises. Some tap-rooms are only open on selected days and operate limited hours so do check their opening hours before you pay them a visit.

And I wonder how many people know that there used to be a brew-house in Rivenhall! It was sited in a row of long-gone properties in Oak Road, on the opposite side to the village bottle-bank and a little way towards Hoo Hall Cottages.

In Memory of Tessa Hill

DEATH

In Loving Memory of Tessa Hill aged 87 years .

6th June 1936 - 17th July 2023 after a short illness.

Loving wife of Bob , Mother to Richard , Deidre , David and Michael.

Grandma to Martin , Susan , Katie , James ,Jessica , Robyn and Amber.

And Great Grandma to 4 Great Grandchildren.

Tess will be greatly missed.

Cremation has taken place on 1st August 2023.

IF I SHOULD GO TOMORROW

If I should go tomorrow
It would never be goodbye
For I have left my heart with you
So don't you ever cry.
The love that's deep within me
Shall reach you from the stars
You'll feel it from the heavens
And it will heal the scars.
Author Unknown
Judy Hill

Autumn just around the corner – Protect your home during darker nights.

We are coming to the end of summer and autumn will soon be with us followed shortly by winter. Now is a good time to think about preparing for the autumn and winter months.

Internal lights - 29/10/23 the clocks go back, check and reset the time of your timer plugs, lights, and other security devices. **Remember to a thief a house in darkness is empty.** Some of the things you can do to create the illusion you are in when your home is unoccupied are: - lights on in rooms that you would normally occupy, TV simulators, a doorbell that you can answer remotely on your smartphone.

External lighting and CCTV - Make sure that external lighting and CCTV is working and clean. To the front lighting operated by a daylight sensor is best.

Hedges, Trees and plants - A consideration when gardening – most **thieves like to work unobserved**. Have your plants or shrubs grown and are they now obstructing CCTV or lighting, does it now prevent neighbours and passer-by's from seeing your frontage? If so a spot of pruning would be advisable, to the front it is recommended to keep hedges and shrubs to about 4' (1.2m) and with trees prune lower branches where suitable to allow that visibility of your property.

Sheds and gates - keep them closed and locked when not in use, review and maintain the locks as required. Alarms on sheds and outbuildings are a good idea.

Property marking - tools and lawn mowers going away for the winter, if you have not done it already make a note of the model and serial numbers and consider a property marking product.

Heating Oil - with the value of fuel it is worth considering its security. In the more isolated parts of the countryside it is primarily domestic properties that have been targeted by the heating oil thieves, but we have also seen such thefts at farms and other businesses. There are several security devices available that will protect your fuel supplies - details of which can be found via your fuel supplier or local plumber's merchant. One such system is Tank Commander www.commandersecurity.co.uk which has "Secured by Design" accreditation <https://www.securedbydesign.com/> . Products like this will detect a dramatic drop in fuel and notify you by phone and/or audible alarm. There are also other similar security products that can add onto an existing intruder alarm system, whilst others may protect the filler cap and there are of course the conventional locks. Another consideration would be concealing it with landscaping and spiky planting around the tank, restricting access to it with gates or fencing, and where possible locating the tank under lighting in view of lived in rooms within the house.

If you would like further advice regarding security please look at the Essex Police website www.essex.police.uk/cp/crime-prevention/ and <https://www.securedbydesign.com/> .

End to End Nature Care.

By the time many of you read this, our schedule of summer evening activities will have concluded. On Monday (yes, Monday) 4th September at 7pm we are visiting Henry Dixon Hall to see what plants, animals and fungi we can find in and around the grounds. Then, when it starts to get dark, we will be surveying for bats. There have been large reported colonies here but they can be peripatetic so we will see if they are there or not.

On a couple of our recent Wednesday evenings we have just gone

for a walk to see what could be found. As well as giving us some exercise, it can be surprising what is almost literally stumbled across. Sharp eyes can spot unusual plants and interesting rocks and stones (it is quite possible to find fossils while walking our local countryside, and almost every piece of flint has a story to tell) while there are always birds, mammals and "herps" (herpetofauna = reptiles and amphibians) to listen or look out for.

Simon Brice also kindly gave us a guided tour of the gravel pits just across the A12 in Little Braxted. It is difficult to picture the scale of the operation until you are standing in the middle of one of the large excavated areas. With very little overburden the sand and aggregate has been relatively easy to extract. It is then sorted through screens to divide it up into various size fractions for different uses. We noticed Sand Martins had already colonised the face of one of the pits and Simon himself mentioned how quickly plants can colonise disturbed ground. Simon also showed us a very impressive array of fossils which had been dug up during the excavations, including several large mammoth teeth and two sizeable pieces of tusk as well as bones from a variety of other large mammals.

Our summer schedule ends in early September because we meet in the evening and by that time of year the light is fading early. Although it is not necessarily the best time of day to meet to study nature (most butterflies and other larger insects have long since settled down to roost, for example) we do so because many people work. It does not mean that there is suddenly nothing to see, indeed there are phenomena of interest to the naturalist occurring at all times throughout the year. As mentioned earlier, simply going for a walk in the countryside is a good way of looking out for things. Some people claim they are not sure where to go but maps have always been available and nowadays the internet makes it easier than ever to identify where public footpaths can be found. For very detailed information, one can find an interactive map of public rights of way on the Essex Highways website:

www.essexhighways.org/prow-interactive-map

As many of you will already appreciate, we are lucky to have some lovely public paths in the Rivenhall area, including those in and around Tarecroft Wood and Rivenhall Thicks and the network of paths to the east of Church Road, mostly linking with the Sniveller's Lane bridleway between Rivenhall and Kelvedon. There

has been some recent confusion around the path running roughly south from the little bridge on the lane to Hoo Hall, which brings you out onto Oak Road by the railway bridge. I know most people have walked a path along the edge of the crop for some years but the actual right of way is much closer to the brook. It has been overgrown for some years but has recently been cleared and is accessible again. It passes through some interesting riverside habitat, along the edge of a cricket bat willow plantation, and is well worth a look. It may become a little soggy when the winter weather returns but it is being monitored and if any drainage or other work – maybe some boardwalks – is needed then it will be pursued.

Looking beyond September, during the winter half of our schedule we will be meeting as usual on the third Wednesday evening of each month, usually in Silver end Congregational Church, Silver Street. Details of the events will be available in future issues of the magazine, as well as being posted on our website www.e2e.silverend.org and on our Facebook group "End to End Nature Care". For any other enquiries I can be contacted via email simon@e2e.silverend.org or on 07947 388180.



A collection of Mammoth Bones and Bison Bones found at Colemans Quarry plus some Jurassic Sea Bed with fossilised sea shells (the white bits).

'In the mood'

*

A fundraising concert for The House of Grace, a local charity providing support for the homeless.

*

Jazz pieces from America and Folk Dances from Europe, for solo piano, performed and introduced by Hans Montenana. Pieces include "The Entertainer", "I got rhythm" and "Molly on the shore."

*

SATURDAY OCTOBER 7th 2023

*

Witham United Reformed Church
at 7.30p.m.

*

Admission free but please donate generously!
Refreshments served after the concert.




Harvest was in full swing as I went to press! Here are some local pictures the Combine is pictured at the back of Hoo Hall just as it released it's load into the trailer.

It's a while since I've seen round bales but here are some at Goldhanger

FOOT HEALTH PRACTITIONER



HOME VISITS




- NAIL TRIMMING
- CORNS
- CALLUS
- THICK NAILS
- HARD SKIN

COVERING:
Chelmsford
Witham
Danbury
Stock.....

JAMES NEWMAN (MCFHP,MAFHP)

TELEPHONE: 01376 519036

MOBILE: 07793971351



Brookend
VETERINARY PRACTICE LTD
62 Braintree Rd Witham

**CARING FOR THE PETS OF WITHAM AND
THE SURROUNDING AREA FOR 30 YEARS**

**Late night surgery Monday's
and Wednesdays till 7.30pm**

Surgery Opening hours:-

Monday to Saturday for appointments

Monday and Wed 8.30 am –7.30 pm

Tues, Thurs & Fri 8.30 am—6.30 pm

Sat 8.30 am to 12 Noon

Tel: 01376 500038

www.brookendvets.co.uk



PC Doctor
Operations Limited

**For all your computer
requirements including:**

Virus prevention, detection & removal
Broadband, Networking, Wireless & Firewall set up
Email & SPAM filtering
Hardware Repairs & Upgrades
Software Faults & Crashes
Backup Solutions & Data Recovery
Software Installation & Removal
Hardware & Software Supplied
Website Management • Computer Training

**Health
Checks
£39.99**

Office: 01621 891064 • Mobile: 07990 565336

Email: support@pcdocops.co.uk

Website: www.pcdocops.co.uk

Monthly subscription service available to provide complete "peace of mind" and allow you to spread the cost of your IT requirements.

Please contact for further information.

SpeedyBroadband.co.uk **Sick Computers my Speciality**

- Home Networking Problems Sorted Out
- Computer Viruses Removed
- Operating System Upgrades
- Upgrade to Windows 10

**FOR YOUR FREE SURVEY AND
QUOTATION CONTACT**

Peter Hope

Peter.hope@speedybroadband.co.uk

Tel: 01376 502605

Mob: 07904 235101

Website

www.speedybroadband.co.uk

ANGLIA TREE SERVICES

Specialist tree surgery

Residential & Commercial Customers

CROWN REDUCTION • FELLING • TOPPING

HEDGE TRIMMING • ALL GARDEN WORK

STUMP GRINDING

For a quick, tidy and friendly service call:

Tel: 01621 892831



7 DAYS A WEEK • EMERGENCY SERVICE AVAILABLE • FULLY INSURED



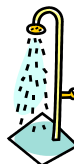
Philip Little

Property Maintenance Magician

Local service at local prices

Knowledgeable and friendly

07973 129808 or 01376 515257



Serving the Local Community for over 125 Years

G. COLLINS & SONS

Funeral Directors Ltd



30 RAYNE ROAD, BRAINTREE, CM7 2QH

01376 342266

4 THE STREET, WHITE NOTLEY, CM8 1RH

01376 583750

WWW.GCSFD.CO.UK

Beautiful Rooms For Rent In Witham & Braintree

We have 4 Lovely houses
2 in Witham—2 in Braintree
With and Without en-suites
£90—£130 per Week

(All inclusive of Rates, Light, Heat, and with Broadband)

See our Website:- www.jbwpartners.co.uk

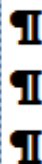
Or Call

John
07850 161629

Mavis
07714 579783

Michelle
07966 323914

Jeremy Larke Television services



Telephone: 01376 513645

Mobile: 07947 601619

Email: telerepair@aol.com

All Television Systems Catered
for Freesat, Freeview, Sky.

- Installations & Repairs To all makes and models
- Full Plasma & LCD Fitting Service
- Wall Mount Brackets Supplied and Fitted
- Aerial & Satellite Dishes Fitted
- Freeview, Freesat & European Channels
- View and Control Your Sky in Other Rooms
- Aerial and Telephone Extension Points Installed



Don't Delay Call Today

Janet C Davies

Dip. F.D. M.B.I.F.D

**BRAINTREE & KELEVEDON'S LADY FUNERAL
DIRECTOR**

Offering a full and Comprehensive Funeral Service

Telephone 01376 339300

For a Personal and Caring 24 hour service

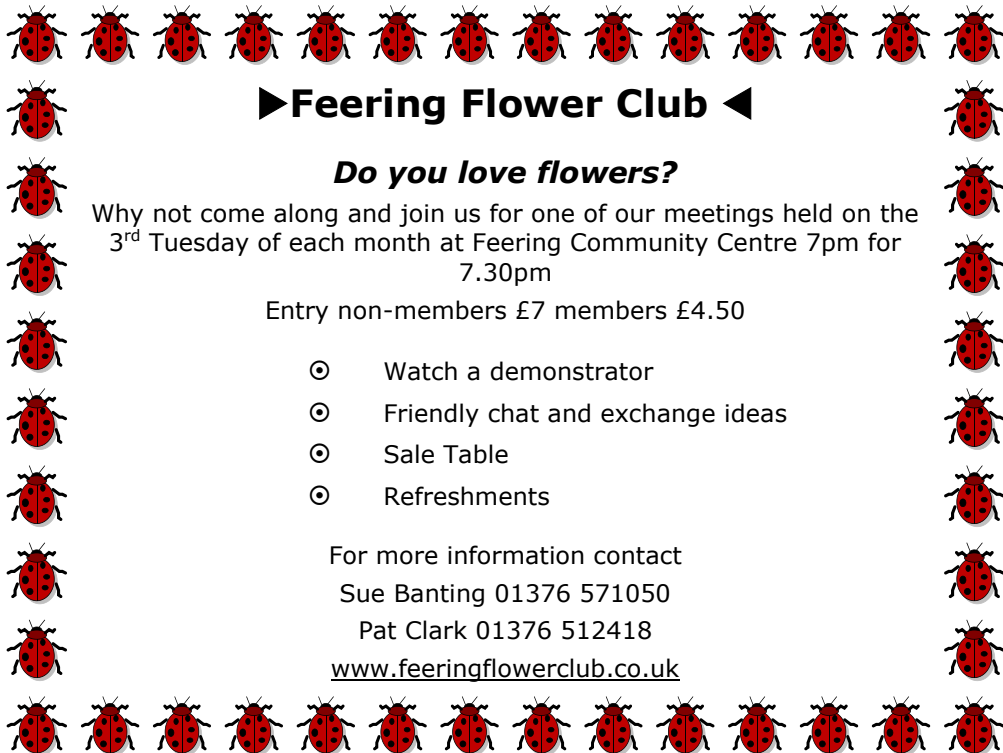
Local Chapel of Rest at Fern House 72 Coggeshall Road Braintree and
Victoria House, Trews Gardens, Kelvedon

Funerals are arranged and carried out in the Traditional Manner but
With 'The Gentle Touch'

Pre payment Plans available—Floral Tributes arranges—Woodland Burials
Bereavement Care—Low Cost Simplicity Funerals - Memorials—Printing
Catering—DWP Funerals

Part of the Hunnaball Family Group

Members of the National Association of Funeral Directors



►Feering Flower Club ◀

Do you love flowers?

Why not come along and join us for one of our meetings held on the 3rd Tuesday of each month at Feering Community Centre 7pm for 7.30pm

Entry non-members £7 members £4.50

- ⊙ Watch a demonstrator
- ⊙ Friendly chat and exchange ideas
- ⊙ Sale Table
- ⊙ Refreshments

For more information contact

Sue Banting 01376 571050

Pat Clark 01376 512418

www.feeringflowerclub.co.uk

DANIEL ROBINSON & SONS

Incorporating
W C BROWN & SONS

Independent Family Funeral Directors & Monumental Masons

A professional, caring, 24 hour service

Private Chapel of Rest

Fleet of air conditioned limousines

Horse drawn funerals available

Traditional and contemporary funeral services to suit your wishes

Funeral pre-payment plans

Arrangements may be made in the comfort of your own home, if preferred

Haslers Lane
Great Dunmow
Tel: (01371) 874518

7 Manor Street
Braintree
Tel: (01376) 320582

31 High Street
Halstead
Tel: (01787) 475533

www.drobinson.co.uk

Turning the pages of History

Research by Tracy Scott

Rivenhall Gardening Club this year has 60 years of shows under its belt. The club is very much smaller now with under 30 members but they are still very supportive to the club even though many of the members live outside the village or cannot get to our meetings anymore.

So let's look back to August 31st 1963 and how a village came together to create their first show.

Rivenhall Gardening Club 1962-63

I have been looking into the history of the first year of Rivenhall Gardening Club from the details given in the Rivenhall Review monthly magazine starting from August 1962 (issue 15) when there was an article titled Rivenhall – Flower and Vegetable Show: "It has been suggested that the 'Review' should consider the possibility of organizing an annual Flower and Vegetable Show to be held in the village next summer". They invited for those interested to get in touch with a view to a meeting to discuss the matter in full and electing a sub-committee to handle details.

In the October issue it tells us that a Public Meeting was held in the Church Hall (Village Hall) on the 19th September and a sub-committee was elected.

Schedule, Staging and Stewards committee: Messrs. P & B Holliday and Mr C. Punt. Side-Shows & Entertainments committee: Rivenhall Youth Club. Refreshments committee: Mesdames H. Stock, W. Holliday, G. Holliday and I. Punt. The Show Secretary: Mrs. Lloyd of Park Palace, assisted by Mr. A.S. Gurton.

The February 1963 issue we are informed that the membership was at 42 and things were progressing quite favourably. The monthly meetings were held on the second Tuesday of each month in the School at 7.30. They had Mrs Clements as Club Secretary and Mr A. S. Gurton as Chairman. Subscription was 2/6d and you were reminded that two shops in Witham gave discount against purchase of gardening equipment!

In March it was announced that more than half the money required to stage the first show in August had been raised from 3 Whist Drives. Membership was nearly 60 and offers to the Club Secretary of awards and prizes for the upcoming show are still arriving.

April we were informed of the Jumble sale that took place in March

was a great success with over £16 to the funds. The prize money available for the show was now up to £30...and stressed that this first show was for Rivenhall residents only with the boundaries of Rivenhall for this purpose are Park Gate Farm, Appleford Bridge, Rivenhall Fields, Burghey Brook and Hole Farm.

July information informed us about having 80 members and expecting more. Awards were named and classes they were to be issued for: The Mary-Lyons Lloyd Cup: for the highest number of points for flowers (classes 15-27) The Brian Trench Cup: for the highest number of points for vegetables (classes 1-13)

The Parkhouse Cup: for the winner for special class for gentlemen floral buttonhole (Class not shown in the schedule and restricted to pensioners). The Smallholder Blue Ribbon: for best exhibit in Division A and B. The Gardening News Challenge Shield: for the winner for the highest total prize money in divisions A and B. The Smallholder Bronze Medal: for the best vegetable exhibit in division B (classes 28-40). There were also the Amateur Gardening diploma, Popular Gardening diplomas, Woman's Own certificates, McDougall's diplomas. Prize money would be given in some classes: 1st 5/- 2nd 3/- 3rd 1/6d and children class 4/-, 2/- and 1/-.

Information was given in August for the deadlines which is very similar if not the same as they still have now and the show would start at 2pm and end at 6.15pm with the draw of competition results (now it is from 2.15pm – 4pm).

'That was a Show, that was!'

Sept/Oct issue: A wonderful function – the hall completely filled with no less than 570 entries from 85 exhibitors, and everything from within the village. The Club committee is delighted with the response and there seems little doubt that this is an event which will be repeated.

What we do want to say is a grateful 'thank you' to all who helped in so many ways. We are trying to write to as many people as possible by we hope that this will bridge the gap if we have left anyone out. To everyone, then who exhibited, came to look, loaned and carted tables, sold raffle tickets, bought raffle tickets etc., manned the sideshows and patronised them, provided refreshments and carried pots of tea from the kitchen to the hastily-acquired marquee, who arranged for the caravan used as an office, organised the children's sports, who judged the exhibits and

looked after the judges' welfare, donated and presented prizes, not forgetting those who helped by coming to our fund-raising functions before the day, right through to those stuck in the mundane task for washing-up and who stayed behind to clear up after the Show – to all these, and to the 'Review' for suggesting the whole thing in the first place – Thank You!

The Judges were:

Vegetables

Mr Bradshaw (Witham) Mr Shrimpton (Wickham Bishops)

Flowers and Floral

Mr Gould (Feering)

Domestic, Handicraft and Children's

Mrs Bennett (Witham) and Miss Taber (Rivenhall)

Wines

Mr Lundman (Tiptree)

The cups and awards were presented by Lady Holmes of Sandhurst, Kent and were as follows:

[Brian Trench Cup](#): Mr. J. Youngs

[Mary Lyons Lloyd Cup](#): Mr. P. Holliday

[Parkhouse Cup](#): Mr. W. Cutts

[Gardening News Shield](#): Mr. P Holliday

[Smallholder blue ribbon](#): Mr. P. Holliday

[Smallholder bronze medal](#): Mrs. Trench

[Popular Garden diploma \(Veg\)](#): Mr. A. Sergeant

[Popular Garden certificates \(Veg\)](#): Mr. B. Holliday/Mr T. Smith/
Mr C. Punt/Mr J. Youngs

[Popular Garden diploma \(Floral\)](#): Mrs. Lloyd

[Woman's Own diploma \(Floral art\)](#): Mrs. P. E. Baker

[Amateur Gardening diploma \(Flowers\)](#): Mr Youngs/Mr Holliday

[Amateur Gardening certificate \(Flowers\)](#): Mrs I. Punt/Mr Holliday

[Woman's Own Diploma \(Cookery\)](#): Mrs A. Gurton

[Woman's Own Bronze medal \(Cookery\)](#): Mrs. J. Philips

[Woman's Own Diplomas \(Handicraft\)](#): Mrs E. Jones and Mrs D.
Richardson

[Smallholders certificate \(Wine\)](#): Mrs I. Punt

Rivenhall Gardening Club over the 60 years



Rivenhall Gardeners Club
Years: 1968 / 1987 / 2022

2023 Annual Show

It was sad that last year we were unable to do a show due to lack of show competition between the classes due to the very dry weather etc., we had. We have reviewed our classes to simplify so I hope on the 9th of September our members can show the best they can.

Last October (2022) at our AGM I announced it will be my last year as Chair so I will step down this October, also at our Members Afternoon Tea this August I also explained I was also stepping down from Show Secretary and my last show will be this one. I am sure that the club will run along as the longest village club and hope that the village folk will support it. I would like to thank the committee and members for their understanding for me to step down from these roles.

Tracy Scott

*Come and see our Annual Summer Show held at
Rivenhall Village Hall 9th September 2.15pm*



*. On show will be a variety of
Vegetables, Flowers, Domestic, and Crafts*

Home made teas

Raffle

Entrance Free

RIVENHALL GARDENING CLUB

A reminder that the Club's ANNUAL **SHOW** will be held in Rivenhall village hall on

SATURDAY 9th SEPTEMBER 2023 - 2.15 to 4pm. An open show for members and non-members. Vegetables – flowers – cookery – handicraft/artwork. Entry forms to be with the Show Secretary by **TUESDAY 5th SEPTEMBER**. (tel: 01376 571551). There will be refreshments and a raffle. All are welcome, we look forward to seeing you.

The CLUB MEETING will be held on **Tuesday 12th September**, 7.30pm in Rivenhall village hall. We welcome new members and visitors. Our speaker will be Roger Hance who will talk on Wild Flowers and Orchids of the Countryside. Entrance is £3 to include refreshment. Members' competitions: Horticultural – any vegetable. Domestic – 3 pieces of shortbread.

Flower of the Month. Photograph of the Month. For further information please contact the Club Secretary on 01376 512781.

THE 2023 RIVENHALL VILLAGE FETE

The eagerly awaited village fete on Rivenhall green took place on Sunday afternoon on 27th August: this had been postponed from its original July date due to forecast 50 mph winds.

The new date (at short notice) meant some of the booked stallholders were unable to attend, and two of our three booked musical acts were similarly unable to come. But fast-footwork brought us The Dixilanders - an Essex based New Orleans style jazz band who were brilliant. Backing them were Jackie Allan and George Atkinson from the Essex Caledonian Pipe Band. All played from a colourful red, white and blue stage.

The village fete was for the enjoyment and entertainment of all in the village, but it was also a 25-year celebration of the Rivenhall Millennium Committee who ran the event.

With a little trepidation (an afternoon forecast of sunshine and showers) the fete began with a welcome from John Macrae who first thanked everyone for coming along, then introduced the Dixilanders.

Cream teas were very popular, overseen by committee Chairman Bob, his wife Jenny Turner and Hayley Larkin. Our Essex County Councillor Ross Playle dropped by (as always, he is very supportive of our village events).

Various stalls encircled the green and others were in the main marquee. Lilian Pearce and Jane Macrae busied themselves selling raffle tickets, and towards the end of the afternoon Carole McCarthy and John Macrae drew and announced the winners. There was a plant stall, a games stall and various craft stalls.

Throughout the fete, the Bar-B-Q did a roaring trade: this was very much a slick family operation. In charge were Phil Little and Pam Newall, ably supported by Phil's son Sam and his girlfriend Robyn. All the onions were pre-prepared by Phil's daughter Mia who has recently started as sous-chef at the Ritz Hotel in London!

Out on the village green were a selection of classic cars, and trucks, plus a lovely red Massey Fergusson tractor (thanks Wilson): also on view were two glistening classic motorbikes - one a beautiful Royal Enfield.

The village green was bedecked by colourful bunting and a flagpole proudly flew the Union Jack. Back in the main marquee was a stall selling paintings of various scenic views around Rivenhall: there was also a monitor displaying a slideshow of 250+ photographs of the Rivenhall Millennium Committee's activities in the village over the past 25 years, plus a small exhibition.

Sincere thanks to the 250 to 300 people who came along during the afternoon, and enormous thanks to all the volunteers who worked tirelessly planning, setting-up, serving; and dismantling the marquee, the stage and the gazebos; not forgetting the stallholders and all who brought display items. This was a mammoth piece of organisation which was executed brilliantly under Bob Turner's





management ... and somehow, it did not rain on our Rivenhall village green! The "thin red line" of the Rivenhall Millennium Committee delivered once more.





Flower arranging without Oasis



You are invited to attend

A foam free, sustainable,
eco-friendly demonstration
By Helen Sheard, Floral Designs.

on
Wednesday 11th October 2023
7.30pm

St Luke's Church Hall, Tiptree CO5 0SU

This event will be free for flower-arrangers from sponsoring churches.
Others are requested to make a donation towards the cost of materials.

To book your place,
please phone 07805 697437
or email michaelputtick@btinternet.com
by 18th Sept, if possible



Organised by Thurstable & Winstree Churches' Environmental Group

Quiz Night



Friday 29th Sept 2023- 7.30 p.m
Henry Dixon Hall - Rivenhall End

£12 per Ticket including:
Fish and Chip Supper
(Veg / Vegan Catered for)



Teams of up to 8 players
Team captains to get tickets from:-
Ann Kerr:- Tel 01376 515437
Or Ann Riddleston Tel 01376 515400



Bring your own nibbles drinks and glasses

**HELP WITH
FUNERAL ARRANGEMENTS
RICHARDS
FUNERAL SERVICE
01376 513114**



&8 Newland Street, Witham, CM8 1AH

From advice on how to register a death to making all the arrangements, we're here 24 hours a day.

Members of the National Association of Funeral Directors

A British Owned Company www.dignityfuneral.co.uk



Yoga Moments
Hatha Yoga class

MONDAY 9.30AM
WITHAM BRITISH LEGION HALL

WEDNESDAY 10.30AM
KELVEDON INSTITUTE (Small hall)

YOGA RETREATS
(Contact Mine for details)

(suitable for all levels including beginners)

Yoga can bring many benefits to your life

- Build strength and flexibility
- Ease stress
- Enables restful sleep
- Helps with many health issues

Call Mine Hilmi on 07811 203 981
or email mineyogamoments@gmail.com
to book your place



MONDAY 7PM
WITHAM METHODIST CHURCH

WEDNESDAY 7PM
RIVENHALL VILLAGE HALL

PRIVATE 1:1 CLASSES
CHILDREN'S YOGA COMING SOON

WWW.YOGA-MOMENTS.CO.UK



TONE YOUR BODY, RELAX YOUR MIND



TUESDAY PRAISE
at Witham URC - everyone welcome
September 2023

DATE

LEADER

5th September

Deirdre Schnaar

12th September

Gretta Bray

19th September

Femi Cole-Njie

26th September

Lorna Bantock

TIME: 12.30 - 1pm



SWEEP SERVICE REPAIR

BIRDS NEST REMOVAL

CHIMNEY Chick

STOVE ROPE

CAMERA INSPECTIONS

YOUR LOCAL LADY CHIMNEY SWEEP

GLASS & BRICK REPLACEMENT

Call Hayley - 07399 628 527 www.CHIMNEYCHICK.co.uk chimneychick@icloud.com

COLEMANS COTTAGE FISHERIES

Lakeview Tearooms

Come and enjoy the view whilst
having a bite to eat



Open Thursday to Sunday 9am to 3pm
Breakfast, Lunches
Bar, Snacks
Afternoon Tea
Sunday Roast (01376 516383 to Book)

For more information go to:

<http://www.colemansfisheries.co.uk/witham/cafe/>

Colemans Cottage Fisheries

Little Braxted Ln, Witham CM8 3EX

FREE PARKING 01376 516383

Grow, Flourish. Succeed Academy Nursery



we are pleased to be offering a
nursery school

for children ages 2 years and up.

Each session will cost £10 (£20 for
a full day)

Nursery sessions during term time:

Mornings: 8.45am - 11.45am

Afternoons: 11.45am - 2.45pm

All Day: 8.45am - 2.45pm

If you would be interested in a
place, please email

[nurserysil@connectedlearningmat.co](mailto:nurserysil@connectedlearningmat.co.uk)

[.uk](mailto:nurserysil@connectedlearningmat.co.uk) with your child's name, date of
birth and the sessions and days you
require.

Aerial Photography

Barns

Chimneys

Roof Tops

COST EFFECTIVE, SAFE ACCESS,
ROOF TOP INSPECTIONS BY
DRONE WITH NO NEED FOR
SCAFFOLD, TEMPORARY WORK
OR STRUCTURES REQUIRED.



NON DISRUPTIVE, FAST AND
PROFESSIONAL SERVICE, SAME
DAY REPORTS AND
RECOMMENDATIONS FOR
REPAIRS

FULLY CAA AND CIOB
REGISTERED, QUALIFIED AND
INSURED SERVICE. CARRIED OUT
BY EXPERIENCED SURVEYORS.

Call to discuss your requirements;

Chris; 07817219133

Jim; 07966403783

email: highsightse@gmail.com

Historic Buildings Monitoring

Building Inspections

Estate Records

Organisations in Rivenhall

Clerk to Parish Council	Keith Taylor	516975
Email parishclerk@rivenhallparishcouncil.net	meets every first Tuesday	
End to End Nature Care	Simon Taylor	01621 810141
Gardening Club	Carole McCarthy	512781
Meets on 2nd Tuesday at 7.30pm in Village Hall		
Carpet Bowls	Mick Marshall	512836
Meets every Thursday at 7.30pm in Village Hall		
Playing Fields Association	Mick Marshall	01376 512836
Spread Your Wings Dance Acam	Laura Pearson	01376 741317

Facilities

Hire of Village Hall	email rivenhallvillagehall@gmail.com	
Hire of Henry Dixon Hall	Tracy Scott	571551
Oak Store Rivenhall "Open All Hour" Tel AJ		01376 538838

Organisations in Silver End

Clerk to Parish Council	Mrs B. M. Temple	618464
Email parishclerk@silverendparishcouncil.gov.uk		
Bowls Club	Paul Mann	07551 006906
Children's Centre	Faye Savage	587960
Neighbourhood Police	Braintree Policing Dial	101
Congregational Church	Sharon Gray	583913
Friendship Club	Maureen Green	585275
Silver End Gad Abouts	Denise Sullens Smith	07952 992782
Gardening Club	Liz Woor	585586
Guiding Group	Carol Hutchings	07857 663959
Neighbourhood Watch	Judy Hill	07896 975839
Scouting Group	Elaine Hall on +44	7885 489788
St Mary's Church (R.C.)	Vivian Phillips	583598
Tennis Club	Jason Cairns	584581
Workers Educational Assoc.	Brian Gillion	583706
Luncheon Club	Helen Thomson	583255
Doctors Surgery		583387
Silver End Heritage Society	Jackie Nesbitt	07707 084608
Silver End United Football Club	Mark Edgell	584639 Web
Site www.silverendunitedfc.co.uk		
Women's Institute	Brenda Warnes	07931 548193
Community Warden	Jackie Windard	07785 515526
Post Office in Co-op - please note that it closes at Lunchtime 1-2pm		
Closes 1 pm Wednesday and 12.30 pm Saturday		
Library: Tues 2pm to 6pm Thurs/Saturday 9am to 1pm		

HUNNABALL
Family Funeral Services



Here **whenever** you need us

Funerals | Memorials | Pre-paid Funeral Plans

Hunnaball of Witham

Old Bank House, 95 Newland Street, Witham CM8 IYZ

01376 511592

www.hunnaball.co.uk

JANET C. DAVIES
Lady Funeral Directors



**Our Ladies
in Hats**

*"funerals with
a gentle touch"*

Funerals | Memorials
Pre-paid Funeral Plans

Janet C Davies of Kelvedon

233 High Street, Kelvedon CO5 9JD

01376 573691

www.hunnaball.co.uk

DRH LANDSCAPES

Est. 1987

Quality Comes 1st

**Garden Landscape and Design – Hard Landscaping – Soft Landscaping
Grounds Maintenance for Private and Commercial Premises**

- Are you planning to redesign and landscape your garden?
- Does your garden just need a little TLC or a complete makeover?
- Are you looking for assistance with regular garden maintenance or perhaps a one-off visit to get things back in order?
- Is your lawn looking tired? Would you like a new replacement lawn or artificial lawn instead?

We are a family run business with over 30 years of experience working in the ever changing world of landscape management, business regulations and horticulture, with full public and employer liability insurance, as well as being a fully registered waste carrier with the Environmental Agency.



OFFICE: 01376 514142

We welcome...



EMAIL: info@drhlandscapes.com

www.drhlandscapes.com

Harcro Centre, 77-83 Maldon Road, Witham, Essex CM8 1HP



Proud members of
Checkatrade.com
Where reputation matters